

# Vacuum and charging unit

## iRockall HS

### Vacuum and Refrigerant Charging Unit with High Speed Capability

**iROCKALL HS** is a modular evacuation and small productivity charging station for HFC and HCFC refrigerants. The unit represent the top of the iRockall series range.

The unit can be supplied with one or two injectors ( iRockall HS - DUE)

**iROCKALL HS** is ideal for high throughput production lines of domestic and commercial refrigerators/freezers, air conditioners, heat pumps, liquid coolers where high amount of refrigerant need to be charged.

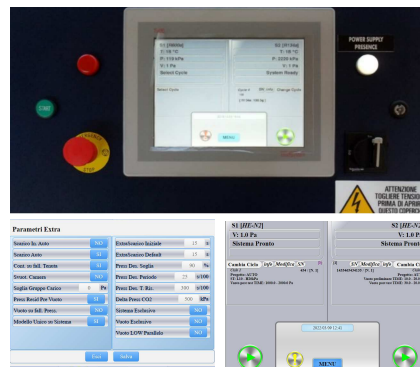
### Characteristics

- Compact and light weight
- Charging capacity: up to 100 kg
- Charging speed: up to 65 g/s with heating belt
- High charging accuracy: 0,5% of the charged amount
- Digital refrigerant metering system
- Built-in vacuum pump (17 m<sup>3</sup>/h @ 50 Hz, different on request)
- Interactive Colour Touchscreen
- Data Collection Application over TCP/IP protocol
- Up to 1000 programmable work cycles
- Microprocessor controlled
- Built in according to the European Machinery Directive, Safety standards CE marked

iRockall HS



Touch screen machine Controller



Injectors PLUVIO V4



## Vacuum and Charging Unit *iRockall HS*

- Domestic refrigerators and deep freezers
- Professional Refrigeration
- Refrigerated show cases and cooling cabinets
- Automatic food and beverage dispenser machines
- Refrigerating units for transportation
- Ice-cream machines
- Dehumidifiers
- Big Chillers and centralized air conditioning stations
- Industrial refrigeration
- Electrical cabinet coolers
- Domestic air conditioners
- Car, bus, truck, tractors air conditioners
- Refrigerators and air conditioners for boats or caravans
- IT cooler
- Compressed air driers
- Condensing units

iRockall HS Technical Characteristics	iRockall HS - Uno	iRockall HS - DUE
Injectors/Type	1/PLUVIO	2/PLUVIO
Injector length	3,5 m	
Refrigerant metering systems	1	2
Charging capacity	Up to 100 kg	
Charging speed	Up to 130 g/s (260 g/s on XS Version)	
Charging accuracy	< 400 g: ±2 g > 400 g: ±0,5%	
Injector connection	¼" Hansen F (ISO 7241B)	
Refrigerant supply connection	¼" Hansen M (ISO 7241B)	
Working compressed air	6 ÷ 7 bar - filtered - not lubricated	
On-board alarms	3 light alarms (green/white/red) on column	
Programmable work cycles	Up to 1000	
Nominal Vacuum pump rate	17 m <sup>3</sup> /h	
Control unit	TS690	
Working temperature	5 °C .. 45 °C	
Power Supply	400 V @ 50 Hz – 3ph + GND	
Dimensions (L x W x H)	850 x 600 x 1400 mm	
Weight	~130 kg	

Optional features and devices
/XS version with extra charging speed up to 300 g/s
TRE or -QUATTRO version with 3 or 4 Injectors and relevant Refrigerant dosing Systems
Additional light and acoustic alarm
Injector with 3/8" Hansen connector
Injector Length extension
Injector with 1/4" SAE Auto connector
Injector with 1/4" Schrader connector
Additional vacuum-only Injector Head
Automatic working cycle selection performed by bar code reader
Printer

\* FT software department develops customized software on request